



18 South Road

Faversham, ME13 7LR

£325,000



18 South Road

Faversham, ME13 7LR

£325,000



- Victorian Property
- Three Bedrooms
- Close To Town Centre
- End Of Terrace
- Double Cellar
- Walking Distance To Train Station

Discovered just a stone's throw from Faversham town centre, we are delighted to bring to market this three bedroom, Victorian end of terrace home.

On entering the property you are greeted by the welcoming entrance hall, off which you find the large living room. A bay window to the front of the property floods the room with natural light. Further along the hall you reach the dining room and spacious kitchen/ diner. The dining room is a great size and French doors lead out into the rear garden. The kitchen boasts ample cupboard and counter-top space, an electric double oven and gas hob. There is space to accommodate a dining table.

Stairs lead from the kitchen to the large cellar. The cellar covers the footprint of the main house and is divided into two separate rooms. These rooms offer lots of potential to a new owner.

The separate dining room is a great size and French doors lead out into the rear garden.

Upstairs, accommodation consists of three bedrooms and a family bathroom. Bedrooms one and two are generously sized doubles. Bedroom

three is a single sized room, or alternatively could make the perfect home office. The bathroom includes shower over bath, w/c, wash basin and heated towel rail.

Outside, the garden can be reached from a door in the kitchen/ diner or the French doors from the dining room. The garden is mostly laid to hard standing and provides a blank canvass for the next owner to create their perfect garden. The property also benefits from a side gate, giving access to the garden and the rear of the property.



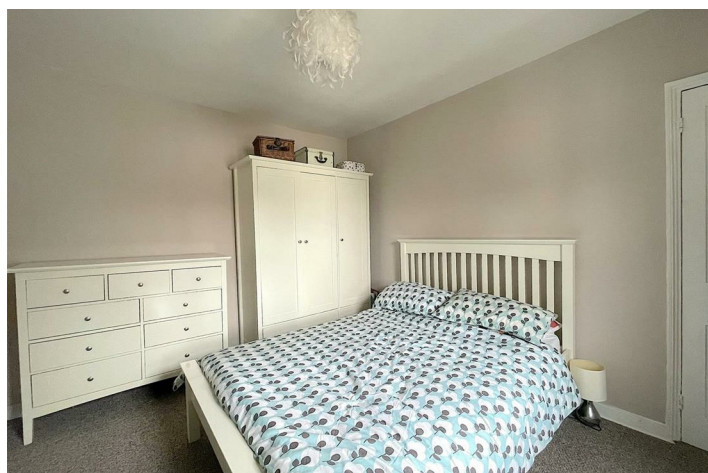
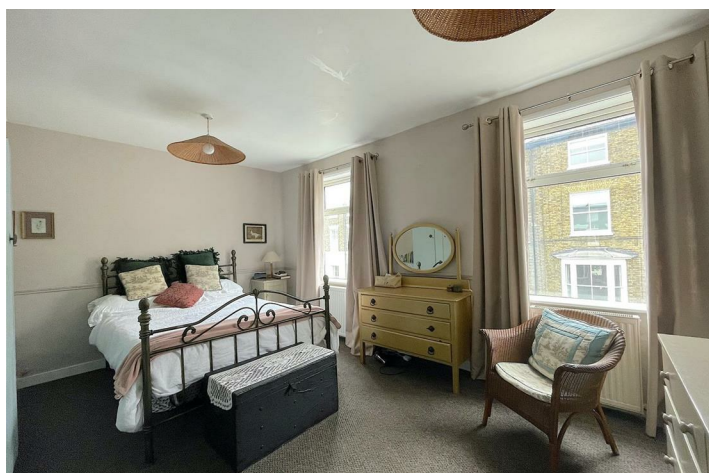
Faversham's bustling, historic town centre is a two minute walk from South Road. Faversham mainline railway station is nine minutes on foot or three minutes by car, with services to London St Pancras, Canon Street and Victoria stations taking just over an hour. Junction 6 of the M2 motorway is a four minute drive away.

Faversham town centre is full of independent retailers, coffee shops, pubs and restaurants, as well as a popular market held three days a week. Held under the iconic Guildhall; Faversham Market is believed to be the oldest in Kent, having been recorded in the Domesday book in 1086.

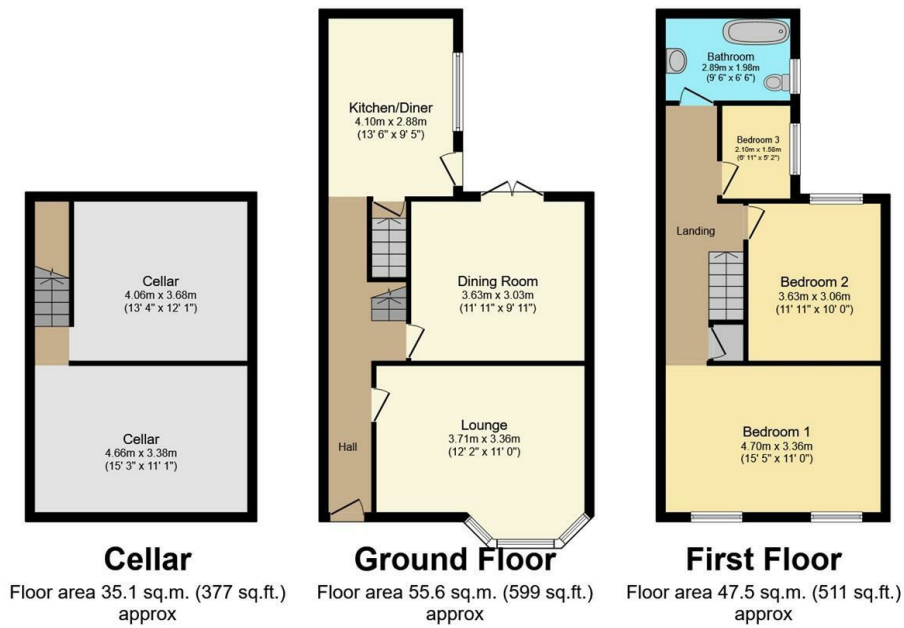
Faversham is steeped in history with its oldest building dating back to 1234. A lot of Faversham's character comes from its charming architecture with buildings surviving from the medieval, Georgian and Victorian periods, through to the present day. The town is also home to Britain's oldest brewery – Shepherd Neame.

The town contains several both 'Good' and 'Outstanding' Ofsted rated schools at both primary and secondary level, including the excellent Queen Elizabeth's Grammar School.

Viewing highly recommended. To book your viewing, please contact Iliffe & Iliffe.



Floor Plan



Total floor area 138.2 sq.m. (1,487 sq.ft.) approx

This Floor Plan is for illustration purposes only and may not be representative of the property. The position and size of doors, windows and other features are approximate. Unauthorized reproduction prohibited. © PropertyBOX.

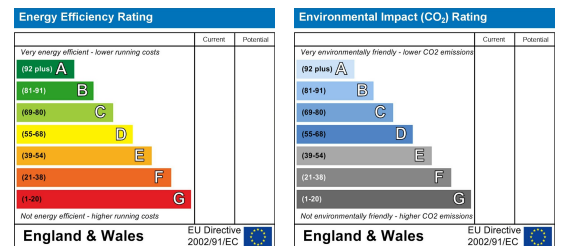
Map



Viewing

Please contact us on 01795 391 190 if you wish to arrange a viewing appointment for this property or require further information.

Energy Efficiency Graph



These particulars, whilst believed to be accurate are set out as a general outline only for guidance and do not constitute any part of an offer or contract. Intending purchasers should not rely on them as statements of representation of fact, but must satisfy themselves by inspection or otherwise as to their accuracy. No person in this firm's employment has the authority to make or give any representation or warranty in respect of the property.

